

SANHE



P-808

808NM DIODE LASER HAIR REMOVAL SYSTEM

Beijing Sanhe Beauty S & T Co., Ltd

Perspective



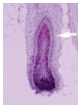
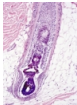
Super cooling
Sapphire Colling 0-5℃
Professional
Micro channel technology
High
power Gemany bar
Huge
12*12mm spot

- Modern Design
- Stable output
- Short time irradiation
- Permanent effect
- Easy to control
- Excellent clinical effect
- High security



Theory

- P-808 System, use special laser with long Pulse-Width 808nm, can penetrate to hair follicle .
- Using selective light absorption theory laser can be preferentially absorbed by heating the hair shaft and hair follicle, moreover to destroy the hair follicle and oxygen organization around hair follicle.
- When laser outputs, system with special cooling technology, cool the skin and protect skin from being hurt and reach a very safe and comfortable treatment.



Operator interface



1. Touch screen is the main operation and display part of the hair removal system.
2. Adopting the blue and white color, the interface is concise, readable and considerate.
3. According to ergonomics, the operator interface is designed separately for both male and female.



4. Through the touch screen, you can achieve the functions include shutdown, laser parameter settings and ready and use the laser.
5. You could only do the parameter setting, mode switch, refrigerator opening and shut down during standby mode.



Specifications

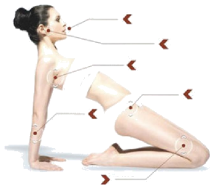
Laser Generator Power	600W
Machine Type:	P-808
Laser Type:	Semiconductor laser
Laser wavelength	808nm
Sapphire size:	12*12mm
Energy Density:	10~120j/cm ² (continuous adjustable)
Pulse width:	20~1200ms(continuous adjustable)
Repetition frequency:	1~10HZ
Cooling way:	sealed inner circled water cooling system,
Treatment head temperature	0~4℃
Power rating:	2200w
Power supply:	110V±20%, 50Hz, 10A single phase; ~220V±20%, 50Hz,10A
Security Classification:	I class、BF type
Weight:	45 kg
External dimensions:	693mm×460mm×550mm (length*width*height)

Technical advantages



- High Energy Output: Make sure good effective for any coloring matter -----120J
- Long Pulse Width: Make sure heating hair follicle, lasting hair removal-----1200ms
- Big Spot Size: Fast and Effective Results -----12*12
- Strong Cooling: Instance cooling skin, safe and comfortable -----5℃
- Fast Speed: slide treatment to make it safety and convenience-----10HZ

System Applications



- Treat all kind of hair color from black hair to white hair;
- Treat all skin types from white to dark skin;
- No pain and shorter treatment sessions ;
- Effective and safe treatment for permanent hair removal;

I



II



III



IV



System Advantages



The basic theory of Diode Laser Hair Removal Machine is the biological effect. The machine emits the 808nm laser which could be absorbed easily by the pigment located in hair follicle while won't damage the normal surrounding epidermis. The light energy is absorbed by the pigment in the hair shaft and follicle then it is transformed into heat energy, thereby it rises the temperature of follicle, till the temperature is high enough, the follicle structure is destroyed irreversible, the destroyed follicle will be removed after a period of natural physical process, thus achieve the permanent hair removal purpose.

1. The best laser wavelength

The 808nm near infrared laser of P-808 Hair Removal System is best for absorbing melanin so that can effect in different parts and hair follicle and reach to removing any hair effectively. From the diagram, we can see 808nm is best for absorbing melanin and less absorbing others.

2. Long laser pulse width

Laser pulse duration is 10ms to 1200ms adjustable, can do treatment effectively special for different hair and lasting!



3. No pigmentation, used for any skin type.

P-808 hair removal system uses penetrate technology and skin absorbs fewer lasers and no pigmentation.

4. Pure Sapphire contact cooling system can make sure that treatment more safe and no hurt to skin.

Pure Sapphire contact cooling system of P-808 hair removal system can make sure that doctor use the maximum energy and can not hurt skin. This kind of cooling system can make sure that no hurt to skin when patients are given more pressure. As reported, the pressure can increase 30%-40% light.



5. The big spot size can speedup the treatment speed.

P-808 use 12*12mm big spot size. It makes sure that when do large area hair removal and prompt treatment speed and efficiency. Because of big spot size, it can escape from repeated treatment for hair area.

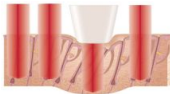
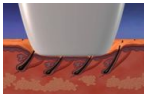
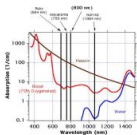
6. Super big true color touch screen make the operation more easy

12 inch multi color touch screen, you can choose man or woman , skin color and treatment areas,very easy to operate !



7. The power module design is suitable for import and export business. It is convenient to maintenance.

8. Just like the picture show below



694 755 808 1064

Before & After Treatment

